

# EagleEye Red™ Automated Infrastructure Management Software

Regional Availability – Global



Siemon's EagleEye Red Automated Infrastructure Management (AIM) software helps better document and manage your IT network and devices. HTML5-based, EagleEye Red is a highly visual and intuitive software which provides a range of graphical views for rack and floor layouts and infrastructure node hierarchies. Its multi-tiered network discovery protocols allow users to easily scan and find all IP based devices within their network and position assets at their correct locations. When used in combination with Siemon's MapIT® G2 connectivity hardware, both physical layer and network device connections are updated automatically and provide an invaluable end-to-end circuit trace allowing users easily monitor, manage and maintain their network infrastructure.



## EagleEye Red Features:

### Simple Management

The real-time database with auto-discovery stores the status and location of all cabling and IT assets to minimize troubleshooting time and maximize equipment and rack utilization.

### Intuitive Documentation

Real-time physical layer documentation and monitoring including the discovery of IT devices, interactive floor images, rack elevations and end-to-end circuit traces.

### Detailed Analytics

Users benefit from a wide range of out-of-the-box reports allowing them to unlock insights quicker.

### Robust Connections

EagleEye Red features a robust API, allowing for integration with a range of 3rd party applications – compliant with ISO/IEC AIM standards.

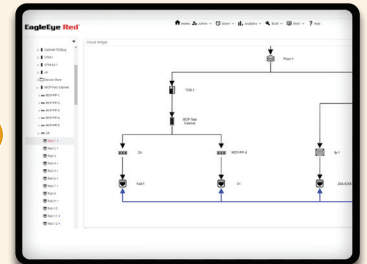
### Enhanced Security

All network activity is detected and recorded in real time, 24/7. Instant alerts on unauthorized access or modification are provided into a single customized screen view making it ideal for NOC teams.

### Streamlined Orders

An intuitive 'work order module' automatically assigns, directs and tracks work orders. This improves accuracy, speeds up processes and maintains visibility of activity throughout the system.

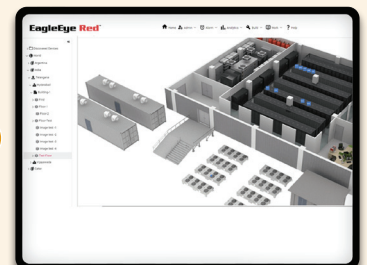
1



### 1. End-to-End Circuit Trace

EagleEye Red allows users to view their end-to-end circuit layout, including cable and network devices, from the switch port to the end device.

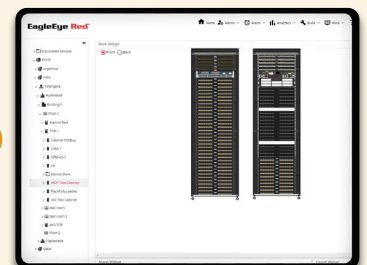
2



### 2. Interactive Floor Diagrams

Users can access an interactive 3D view of their floor layout, allowing them to interact with different assets within the environment.

3



### 3. Comprehensive Rack View

Users can view the front and rear of their rack elevations in 2D, allowing them to easily monitor in-rack connections.

# Product Information

## SYSTEM REQUIREMENTS

<b>OPERATING SYSTEM</b>	Only 64-bit installations of Windows are supported, such as: Windows Server 2012 or 2012R2, Windows Server 2016 or 2019 and Windows 10
<b>PROCESSOR</b>	6-core processor recommended
<b>MEMORY</b>	8GB or greater
<b>DISK SPACE</b>	30GB minimum

## Ordering Information

### SOFTWARE LICENSE

Part Number	Description
EE-SWL-RDA	EagleEye Red Software License, 1 Required Per Cabinet/Rack, Includes First Year of Support/Maintenance
EE-SWL-RUA	EagleEye Red Software License, Unlimited Quantity of Cabinet/Racks, Includes First Year of Support/Maintenance

### SOFTWARE MAINTENANCE AND SUPPORT

Part Number	Description
EE-MNT1-RDA	1-year EagleEye Red Support/Maintenance, 1 Required Per Cabinet/Rack
EE-MNT3-RDA	3-year EagleEye Red Support/Maintenance, 1 Required Per Cabinet/Rack
EE-MNT1-RUA	1-year EagleEye Red Support/Maintenance, Unlimited Quantity of Cabinet/Racks
EE-MNT3-RUA	3-year EagleEye Red Support/Maintenance, Unlimited Quantity of Cabinet/Racks

### PROFESSIONAL SERVICES

Part Number	Description
EE-SCV-001	EagleEye Red Software Installation, Build, Configuration and Training Services

Contact your local Siemon sales representative or customer service team for a personalized quote today.

Because we continuously improve our products, Siemon reserves the right to change specifications and availability without prior notice.

**North America**  
P: (1) 860 945 4200

**Asia Pacific**  
P: (61) 2 8977 7500

**Latin America**  
P: (571) 657 1950/51/52

**Europe**  
P: (44) 0 1932 571771

**China**  
P: (86) 215385 0303

**India, Middle East & Africa**  
P: (971) 4 3689743

**Siemon Interconnect Solutions**  
P: (1) 860 945 4213  
[www.siemon.com/SIS](http://www.siemon.com/SIS)

**Mexico**  
P: (521) 556 387 7708/09/10

[www.siemon.com/eagleeye](http://www.siemon.com/eagleeye)

