

Pro-6-LR

802.11AX Dual-Band Long Range Access Point

Pro-6-LR

802.11AX Dual-Band Long Range Access Point

Products Description

Pro-6-LR is designed based on the new Wi-Fi 6 technology. It realizes a bandwidth of 160 MHz and a 5 GHz rate as high as 2.4 Gbps, a rate three times higher than that of ordinary Wi-Fi 5 APs and two times that of ordinary Wi-Fi 6 APs. The application of such new technologies as OFDMA, spatial multiplexing, and MU-MIMO drives the network capacity of a single Pro-6-LR to 4 times higher. The high-power RF design helps maintain the quality of Wi-Fi signal even over a long distance, so that wireless clients and AP can work under the high-performance Wi-Fi 6 mode. Pro-6-LR is a perfect choice for such locations as businesses and hotels to deploy high-performance Wi-Fi networks.

ProFi Controller makes it easy to manage and monitor the whole ProFi series in a real-time manner and cloud services enable a remote and secure access free from the restrictions of device location.



Key Feature

- Up to 3000 Mbps dual-band data rate.
- The new WPA3 encryption mode safeguards your network security.
- 2.4 GHz band 2x2 MIMO with a radio rate of 600 Mbps.
- Power input with 802.3at PoE .

Product Features

3 Gbps Wi-Fi, 2.5 times higher rate

Both the 2.4 GHz and the 5 GHz radio bands support the new Wi-Fi 6 standard and the concurrent Wi-Fi rate is as high as 3 Gbps, 2.5 times that of the last-generation of AP (AC1200).

Higher capacity

Supporting OFDMA, SR, and MU-MIMO, 802.11ax greatly improves the system capacity compared with the last generation 802.11ac. With the TWT technology, AP can uniformly schedule the waking and sleep of clients, significantly reducing client conflicts and unnecessary wakeups, and therefore is suitable for high-density crowd scenarios where large numbers of clients are deployed.

More than 20% wider Wi-Fi coverage

With the long OFDM symbol transmission mechanism and 2 MHz narrowband transmission, the 802.11ax protocol significantly reduces packet loss rate and noise interference, and improves the receiving sensitivity of clients. In addition, Pro-6-LR adopts a high-specification RF amplifying circuit, greatly widening the Wi-Fi coverage.

Product Features

Strong anti-interference capability

Supporting BSS coloring, dynamic CCA threshold and power control, the 802.11ax protocol significantly reduces the channel interference in high-density scenarios and improves the utilization rate of spectrum resources, improving the anti-interference capability compared with 802.11ac.

Higher security

The Wi-Fi 6 AP supports the new-generation WPA3 Wi-Fi encryption protocol. Under the WPA3 encryption protocol, even the simple password cannot be cracked, greatly enhancing the security of Wi-Fi networks.

Intelligent roaming protocol

Supporting the intelligent roaming technology based on the 802.11kv protocol, Pro-6-LR enables wireless clients to automatically connect to AP with a better signal, effectively enhancing the user experience.

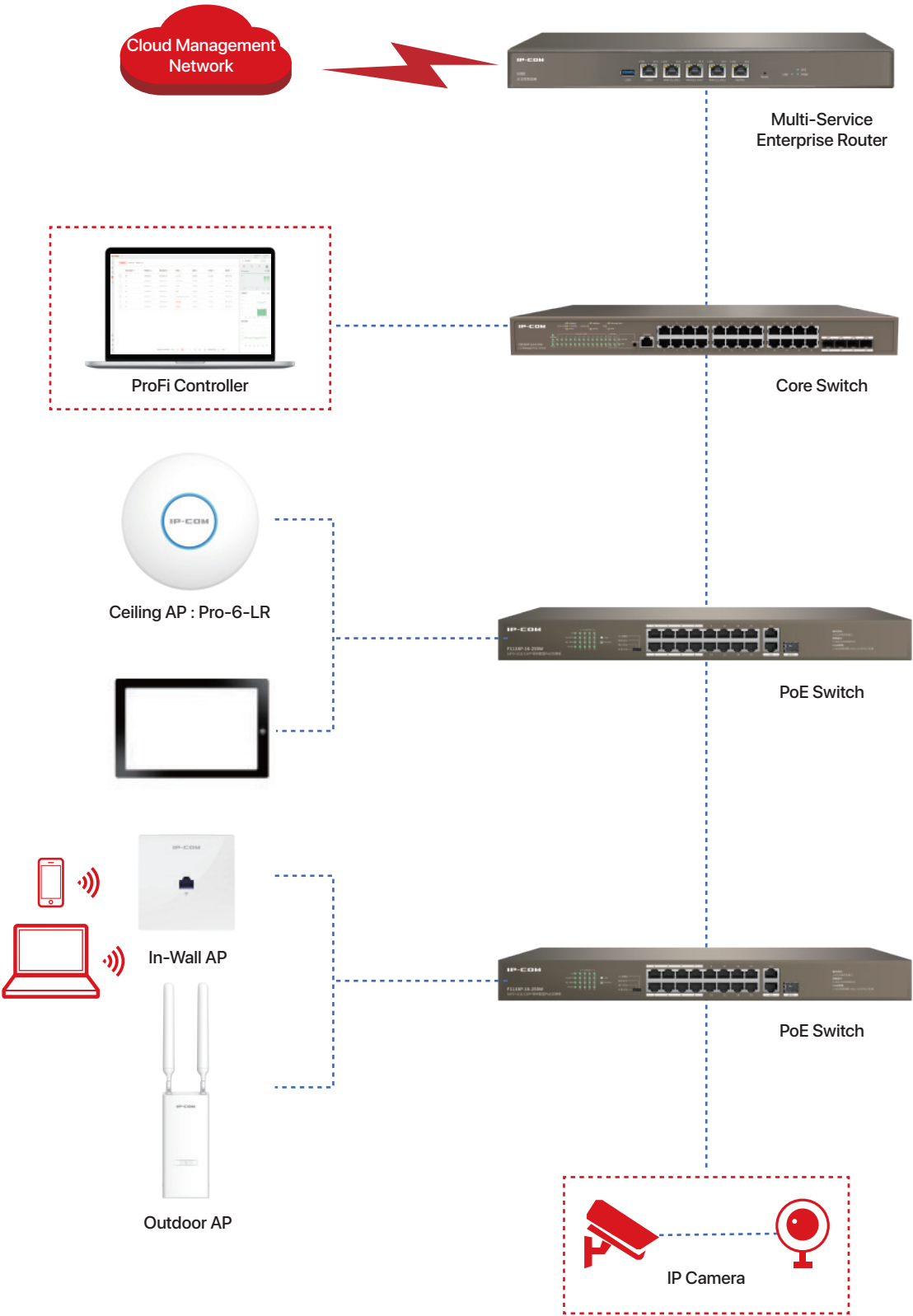
Standard PoE supported, easy installation and deployment

The efficient components and excellent hardware design guarantee the standard 802.3at power supply to 802.11ax dual-band gigabit AP, making installation and deployment simpler, effectively enhancing the user experience.

Centralized management

The ProFi Controller makes it easy to manage and monitor the whole ProFi series in a real-time manner and cloud services enable a remote and secure access free from the restrictions of device location.

Application Scenarios



Specifications

Product Information	
Model	Pro-6-LR
Category	Ceiling
Dimensions	Φ250.6*55 mm
Hardware Specifications	
Frequency band	2.4 GHz, 5 GHz
Wireless standards	IEEE 802.11a/b/g/n/ac/ax
2.4 GHz data rate	1-574 Mbps
5 GHz data rate	6-2402 Mbps
Channel width	20 MHz/40 MHz/80 MHz/160 MHz
MU-MIMO	2X2 MU-MIMO
Ethernet port	One 10/100/1000 Mbps Ethernet Port One 10/100/1000 Mbps Ethernet Port (PoE)
Button	1*Reset
LED indicator	RGB
Max. power consumption	15.74 W
Power supply standard	IEEE 802.3at PoE
Concurrent clients	254
Antenna gain	4*4 dBi
2.4 GHz Max. output power	29+/-1.5 dBm
5 GHz Max. output power	29+/-1.5 dBm
802.11b RX sensitivity	-97 dBm
2.4 GHz 802.11n (MCS7) RX sensitivity	-75 dBm
5 GHz 802.11a RX sensitivity	-95 dBm
5 GHz 802.11n (MCS7) RX sensitivity	-75 dBm
Software Specifications	
Operating mode	AP
Hide SSID	Supported
Max. No. of SSID	2.4 GHz: 7 5 GHz: 4
OFDMA	Supported
Beamforming	Supported
TWT	Supported

Specifications

802.11 k/v	Supported
WEP	Supported
WPA-PSK	AES/TKIP
WPA2-PSK	AES/TKIP
WPA3-ASE	AES
WPA	Supported
WPA2	Supported
Access control	MAC address-based
Adjustable power transmit	Supported
Frequency analysis	Supported
AP isolation	Supported
Connected clients control	Supported
RSSI threshold	Supported
VLAN tagging for SSID	Supported
LED indicator control	Supported
Diagnostics tool	Ping, Traceroute
Scheduled reboot	Supported
Reboot at specified interval	Supported
System logs	Supported
Firmware upgrade	Supported
Reboot	Supported
Firmware upgrade	Supported
Backup configuration	Supported
Restore configuration	Supported

Operating Environment

Default login IP address	192.168.0.254
Default user name	admin
Default password	admin
Operating temperature	-10°C - 45°C
Operating humidity	(10% - 90%) RH, non-condensing
Storage temperature	-30°C - 70°C
Storage humidity	(10% - 90%) RH, non-condensing

IP-COM
World Wide Wireless

IP-COM NETWORKS CO.,LTD.

Tower E3, No.1001, Zhongshanyuan Road,
Nanshan District, Shenzhen, China. 518052

Service: info@ip-com.com.cn

Inquiry: marketing@ip-com.com.cn

Tel: +86-755-27653089